

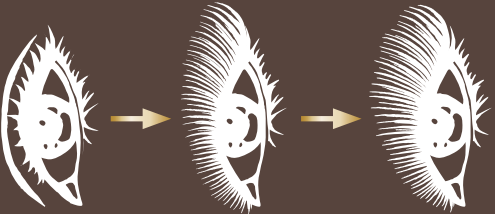


soft
to
intense



TAILOR-MADE VOLUME
DEFINITION

soft
to
intense



MAKE-UP RESULT

LASH QUEEN
CELEBRATION
MASCARA

LASH QUEEN
CELEBRATION
MASCARA

- ADJUSTABLE
RESULT
- EXTREME
DEFINITION
- DEEP BLACK

- ➊ First coat the full center of the upper fringe with the length of the brush
- ➋ Reach the inner corner short lashes with the top of the brush
- ➌ Reach the outer corner short lashes with the top of the brush

APPLICATION

APPLICATION

- ➊ Coat the center of the fringe



- ➋ Reach inner corner short lashes



- ➌ Reach outer corner short lashes





UNPRECEDENTED
JEWEL-DESIGN



Ultra-shine lacquered
and varnished golden
glitter

LASH QUEEN CELEBRATION MASCARA

MAKE-UP RESULT

- Adjustable result
- Extreme definition
- Deep black

TECHNOLOGY

(A brush/formula duo)

- Soft comb brush
= Definition +
No clump
- Formula
= Long playtime +
Gold emphasize black

JEWEL DESIGN

- Ultra-shine
golden glitter